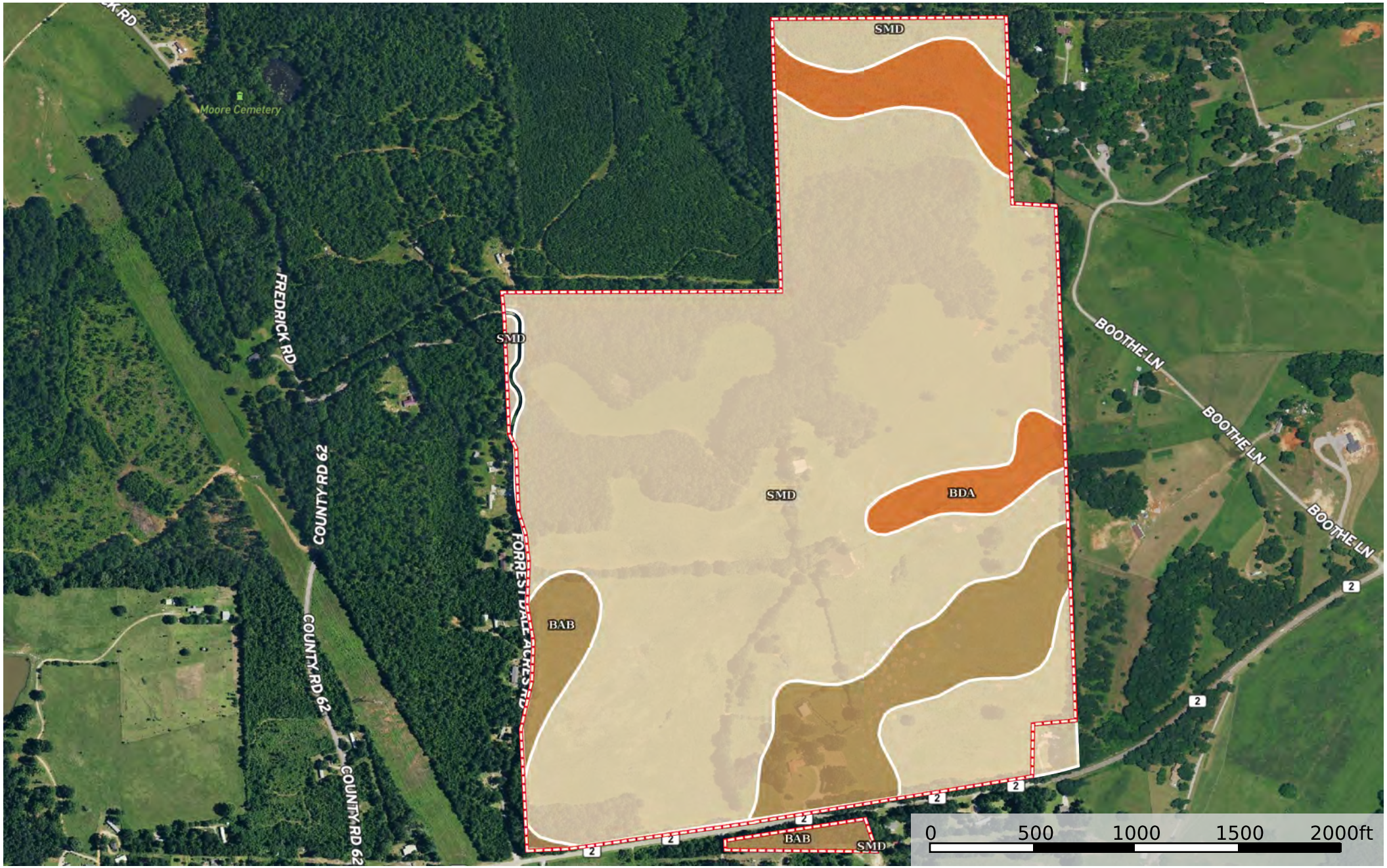


186 acres Bibb County Dunn

Bibb County, Alabama, 186 AC +/-



 Boundary

|  All Polygons 193.72 ac

SOIL CODE	SOIL DESCRIPTION	ACRES	%	CPI	NCCPI	CAP
SmD	Smithdale sandy loam, 5 to 15 percent slopes	156.24	80.65	0	68	6e
BaB	Bama fine sandy loam, 2 to 5 percent slopes	24.25	12.52	0	67	2e
BdA	Bibb-luka complex, 0 to 1 percent slopes, frequently flooded	13.23	6.83	0	47	5w
TOTALS		193.73(*)	100%	-	66.44	5.43

(*) Total acres may differ in the second decimal compared to the sum of each acreage soil. This is due to a round error because we only show the acres of each soil with two decimal.

|  Boundary 191.56 ac

SOIL CODE	SOIL DESCRIPTION	ACRES	%	CPI	NCCPI	CAP
SmD	Smithdale sandy loam, 5 to 15 percent slopes	155.74	81.3	0	68	6e
BaB	Bama fine sandy loam, 2 to 5 percent slopes	22.59	11.79	0	67	2e
BdA	Bibb-luka complex, 0 to 1 percent slopes, frequently flooded	13.23	6.91	0	47	5w
TOTALS		193.73(*)	100%	-	66.43	5.46

(*) Total acres may differ in the second decimal compared to the sum of each acreage soil. This is due to a round error because we only show the acres of each soil with two decimal.

|  Boundary 0.45 ac

SOIL CODE	SOIL DESCRIPTION	ACRES	%	CPI	NCCPI	CAP
SmD	Smithdale sandy loam, 5 to 15 percent slopes	0.45	100.0	0	68	6e
TOTALS		193.73(*)	100%	-	68.0	6.0

(*) Total acres may differ in the second decimal compared to the sum of each acreage soil. This is due to a round error because we only show the acres of each soil with two decimal.

|  Boundary 1.71 ac

SOIL CODE	SOIL DESCRIPTION	ACRES	%	CPI	NCCPI	CAP
BaB	Bama fine sandy loam, 2 to 5 percent slopes	1.66	97.08	0	67	2e
SmD	Smithdale sandy loam, 5 to 15 percent slopes	0.05	2.92	0	68	6e
TOTALS		193.73(*)	100%	-	67.03	2.12









(*) Total acres may differ in the second decimal compared to the sum of each acreage soil. This is due to a round error because we only show the acres of each soil with two decimal.

Capability Legend

Increased Limitations and Hazards

Decreased Adaptability and Freedom of Choice Users

Land, Capability

								
	1	2	3	4	5	6	7	8
'Wild Life'	•	•	•	•	•	•	•	•
Forestry	•	•	•	•	•	•	•	
Limited	•	•	•	•	•	•	•	
Moderate	•	•	•	•	•	•		
Intense	•	•	•	•	•			
Limited	•	•	•	•				
Moderate	•	•	•					
Intense	•	•						
Very Intense	•							

Grazing Cultivation

(c) climatic limitations (e) susceptibility to erosion

(s) soil limitations within the rooting zone (w) excess of water